

earthborn®

All you need to know about...

Silicate Masonry Paint

A highly breathable, durable paint for exterior surfaces. Drying to a classic matt finish, offering a long lasting, weather resistant alternative to conventional masonry paints and limewash.

Why choose Silicate Masonry Paint?

- **High breathability** – Thanks to its mineral silicate binder with less than 5% organic content (as per DIN 18363)
- **Ideal for historic buildings** – Gentle on traditional materials and perfect for renovation work
- **Weather resistant** – Built to last and easy to clean
- **Keeps its good looks** – A non yellowing soft matt finish that won't fade over time
- **Naturally resists algae and mould** - Its high pH gives added protection
- **Excellent coverage** - Rich opaque colour
- **Trace VOC** – Virtually no nasties, so it's kinder to your home and the planet

Where to use it

Earthborn Silicate Masonry Paint is great for all sorts of exterior surfaces – just make sure you use the right primer alongside it for the best results. To work properly, the paint must be used as part of a system with either:

- **Earthborn Silicate Primer** – for bare, absorbent mineral surfaces. This forms a permanent, highly breathable chemical bond that becomes part of the surface itself
- **Earthborn Bonding Primer** – for previously painted or less absorbent surfaces. This helps the paint grip firmly by creating a strong mechanical bond

Not sure which primer to go with? Check the Product Data Sheets or get in touch – we're happy to help!

Not suitable for: synthetic resin renders, acrylic plasters, latex paints, plastic, wood, metal and glass. Surfaces treated to repel water are unsuitable, as their water-resistant properties prevent proper paint penetration and bonding. Also, avoid applying to areas affected by rising damp or salt deposits; these issues should be treated first to make sure the paint can adhere properly and last.



Key Facts

Coverage:

Approx. 5-7m² per litre

Drying Time:

Touch dry around 1 hour. Recoat 6-12 hours.

Based on standard conditions (20°C, 65% relative humidity). Temperature and humidity may affect drying time.

Available Colours:

48 colours including White (can be mixed with some Earthborn Pigments – please see Pigment Data Sheet for details)

Pack Sizes:

100ml, 2.5L, 5L, 10L

pH level:

11.2-11.4

Thinner:

Earthborn Silicate Primer

Durability:

Typically lasts 15-20 years on properly prepared surfaces when used with Silicate Primer and 5-10 years when used with Bonding Primer.

earthborn®

All you need to know about...

Silicate Masonry Paint

Before you start

Make sure all surfaces are in good condition, clean, dry, and free from dust, grease, or salts. Remove any limewash, distemper, or any other water soluble coatings.

Top tip: If you're using more than one tin of paint, mix them together first for a consistent colour. And don't forget to give the paint a good stir – mechanical stirrers work best!

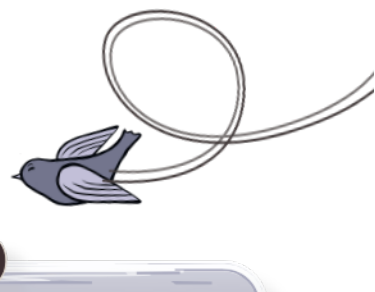
New lime plaster? Give it plenty of time to cure – about 1 month of drying for every 5mm thickness. A 25mm coat, for example, needs at least 5 months.

How to apply

- Apply thin, even coats and keep a wet edge
- Finish full walls or sections in one go
- On your second coat? Apply it in the opposite direction once the first is dry
- Use a flat brush, roller, or spray gun for best results

A few important notes:

- Only paint when the temperature is above 8°C, and avoid direct sunlight, rain or cold weather for at least 24 hours after
- Make sure the walls are dry (moisture content under 15%) and fix any damp issues first to prevent future problems
- Mask off adjacent glass or metal surfaces to prevent etching from splashes
- Stir the paint well before and during use
- Follow the drying times between coats



Breathability and VOC's

Moisture Vapour Diffusion (V):
1515g/m² /24

Water Vapour Resistance (Sd-Value):
0.01m (excellent breathability)

Vapour Permeability Class:
Class 1 (Highly vapour permeable)

VOC Content:
Less than 0.1% (trace only) / < 0.5 g/L

Spray application

Airless pressure:	≥120 bar (approx. 1740 psi)
Flow rate:	2.5 litres/min
Coating thickness:	250–300 g/m ²
Maximum nozzle size:	0.68 mm (527 tip)
Recommended nozzle size:	0.58 mm (523 tip)
Filter/Mesh:	Use an appropriate filter to prevent clogging the nozzle.

Caring for your paintwork

Silicate Masonry Paint doesn't rely on chemical biocides or algicides to stay clean. Instead, its naturally high pH gives protection for the first few years. Over time, this pH will gently reduce, and you may notice some surface growth, particularly in shaded or damp areas. To keep your paint looking its best, clean the surfaces annually using a gentle pressure wash. If needed, use a water based fungicidal wash to address any growth. Also, keep nearby paths and plantings tidy to minimise organic buildup.

What's inside?

Mineral Filler (Calcium Carbonate), Water, Binder (Potassium Silicate), Pigment (Titanium Dioxide), Dispersing agent (Acrylic polymer stabiliser), Thickener (Cellulose, Sodium Chloride)

Silicate Masonry Paint

Which system should I use?

For unpainted, absorbent mineral surfaces, begin by applying a full coat of Silicate Primer. Once dry, follow with a coat of Silicate Masonry Paint thinned by 10–20% using the same Silicate Primer. Finally, complete the process with a full coat of undiluted Silicate Masonry Paint.

For non-absorbent or previously painted surfaces, start with a full coat of Bonding Primer. Once the primer has dried, apply two full coats of Silicate Masonry Paint for optimal coverage and durability.

For mixed surfaces, if the existing paint is purely mineral (e.g., old silicate paint) and the bare areas are also mineral, you can apply Silicate Primer evenly on both. However, if there's uncertainty about the paint type, apply Bonding Primer on both the painted and bare areas for consistent absorbency and appearance.

Please note: On mixed surfaces with bare, porous mineral areas, spot-prime those areas with Silicate Primer to ensure chemical bonding, then apply a full coat of Bonding Primer over the entire surface. The key is to ensure an evenly primed surface for a smooth final coat.

Want to repaint existing Silicate Masonry Paint?

- If the existing Silicate Masonry Paint is clean, dry and dust free, simply apply two coats of Silicate Masonry Paint – no primer needed
- If the surface is powdery or has a fine residue that rubs off, apply a coat of Silicate Primer first to ensure proper adhesion before repainting

Storage and disposal

- Store the paint in a cool, frost free place with the lid tightly shut
- Decant unused paint into a clean, airtight container for storage and use within 6 months of purchase
- Don't pour unused paint down the drain or into watercourses. Let it dry out and follow local disposal rules
- Recycle empty tins where possible

Safety first

This paint is classified as non hazardous; but it is alkaline so certain precautions should be taken. Do not get in eyes, on skin, or on clothing. **IF IN EYES:** rinse cautiously with water for several minutes. Remove contact lenses if present and easy to do so. Continue rinsing. **IF ON SKIN:** wash with plenty of soap and water. May produce an allergic reaction.

Warning: Hazardous respirable droplets may be formed when sprayed. Do not breathe spray or mist. Always keep the product out of reach of children. For full details, see the Material Safety Data Sheet.



Handy tips

- Painting rough or textured surfaces? Use a brush instead of a roller or spray, to work paint into all the nooks and crannies
- Unsure about an old coating? Carry out a substrate adhesion test and check the surface alkalinity (pH test) first to ensure compatibility. A simple water drop test to check the absorption behaviour and a small test area to realistically assess adhesion
- Check the colour before starting, as we cannot accept liability for decorating costs due to colour mismatch. Keep a note of the batch numbers, which can be found on the base of the tin in case you need more
- Don't forget to read the individual data sheets for the Silicate Primer and Bonding Primer before starting

Need more help?

We're always happy to offer friendly advice. If you're unsure which primers or paints you need, or you're working on a listed or sensitive building, just get in touch with our team enquiries@earthbornpaints.co.uk / 01928 734 171 or visit earthbornpaints.co.uk.